

C-MOR-P11 Video Surveillance

C-MOR-3P11 / C-MOR-6P11 / C-MOR-9P11



The C-MOR-P11 is a surveillance system in a combination of hard- and software. The system is ready to use with pre-installed C-MOR software. The setup works with a PC and a network connection as know from Internet routers.

The use of C-MOR is very simple and works with an integrated web interface on all operating-systems like Windows, Mac or Linux. There is no installation on your device needed.

The C-MOR video surveillance is used in many different applications. For Example in trade and industry, in shops, for homes or vacation homes, hotels or restaurants and many more.

Motion on cameras will be detected and recorded. Alarms can be sent by E-Mail with the recording attached or by text message on your cell phone. The time-lapse option shows awesome movies from landscapes, house construction or other events etc. C-MOR supports almost all well known camera manufacturers like Axis, Sony, Panasonic, Level1, Vivotek. Cameras with pan, tilt and zoom can be controlled on the integrated C-MOR user interface. All functions are available on the PC, Laptop, iPhone or iPad also.

The system can be accessed inside a local area network (LAN) or by Internet access. The web based control panel works in almost all systems with a web browser. Take C-MOR with you on your Laptop, Smartphone, Android, iPhone or iPad. Everything works without installing software or apps. Central monitoring has gone, surveillance everywhere is state of the art.

If you would setup a C-MOR system without DSL internet connection, we have a special solution for the access via 3G mobile Internet. The C-MOR system is able to let you get livestream and recordings over the Internet, even when there is no DSL. Take a look on horse stables, your garden or vacation homes.

To find recordings, you can use the integrated filter for date and cameras, or you can use the preview of the recording to find the right recording. Individual users can get individually privileges on the system to take care of the privacy policy.

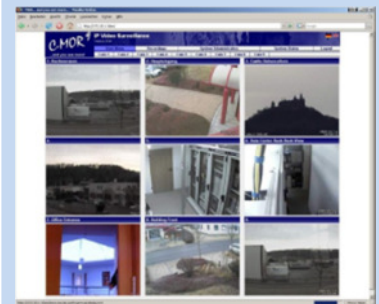
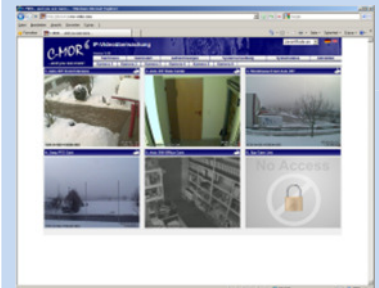
About C-MOR




Video Recording System

C-MOR-3P11, -6P11, -9P11

Key-Features:

- IP-Recorder including hard drive and pre-installed software
- Works with almost all IP-Surveillance cameras including PTZ
- Access via local network or internet
- To use on PC, Laptop, Smartphone, iPhone, iPad,
- Windows, Mac, Unix/Linux
- Motion detection
- Time-lapse recording
- Simple, fast preview
- User profiles and permissions
- Alarm via E-Mail/SMS
- External sensors integration
- Connection to alarm systems



Features	C-MOR-3P11	C-MOR-6P11	C-MOR-9P11
Housing	 Flat-Desk-Case	 Flat-Desk-Case	 Flat-Desk-Case
Number of cam licences	3 licences included	6 licences included	9 licences included
Extension cams*	Yes, up to 12 cameras	Yes, up to 9 cameras	Yes, up to 6 cameras
Base functions	<ul style="list-style-type: none"> • Plug&play installation • Permanent recording • Recording due to motion detection • Recording time up to 360 days • IP configuration either over web interface or optional front display of device • Support of all IP cameras with JPEG/MJPEG standard • Time controlled recordings • Automatic FTP backup for archiving/data saving • Internet remote inquiry • Support of mobile devices like smart phones and cell phones with video player like iPhone, iPad, and other smartphones • User interface in English and German • Usage of alternate IP technics like WLAN and ethernet over power line 		
Advanced functions	<ul style="list-style-type: none"> • E-mail or mobile alarm on camera failure, vandalism or error • E-mail or mobile alarm on motion detection for each camera separately configurable • Motion detection recordings forwarding in e-mails • Automatic FTP backup for archiving or data backup • Internet remote access without any additional software and without installation on the local Computer • Usage of free definable black white picture masks for motion detection areas • Integration of external switches for door alarm, motion detection, temperature monitoring etc. • Support of mobile devices like mobile phones with live pictures in pre-definable picture sizes 		
Security functions	<ul style="list-style-type: none"> • User rights in 3 steps: administrator, common user and demo user rights • User interface to setup up profiles an setup permissions • Encrypted internet access over SSL • SMTP authentication for save e-mail-delivery 		
Standards	IEEE 802.3 (10BaseT), IEEE 802.3u (100BaseTX), IEEE 802.3z (1000BaseTX), HTTP 1.1, HTTPS, FTP, MPEG1, MPEG4, JPEG, SMTP		
Ports	Web interface port 80, 443, 9000, 9443, 9001-9015 to access the cameras		
Network interfaces	1 ethernet port with 10/100/1000 Mbit/s RJ45		
Buttons/Display (optional)	Front 6x push button field incl. double spaced display with 16 characters each, on/off toggle switch, reset button		
Certifications	CE, EN55022 Class A, EN55024, EN 60950		
Processor	Celeron DualCore Processor	Intel Core2Duo Processor	Intel Core2Duo Quadcore Processor
RAM	1 GB	1 GB	1GB
Hard Drive	SATAII 500 GB	SATAII 750 GB	SATAII 1000 GB
Raid-System	Optional 2 hard drives on Raid 1 (mirror)		
Weight	Appr. 7 Kg (~15,5 lbs)		
Power Supply	300W 110/240V 5A, 60/50Hz AC, internal		
Dimensions (W/H/D)	330 x 100 x 420 mm (12.0 x 3.9 x 16.5 inch)		
Warranty	24 Months Warranty		

02/2011

* Additional cameras affect the processing power and storage capacity. The figures relate to the predetermined number of cameras. ² The disc space may be exhausted earlier by high resolution and configuration of the individual cameras. ³ For the text message feature, the mobile operator should provide a mail-2-SMS gateway.